

Holmes Structures
 235 Montgomery St.
 Suite 1250
 San Francisco, CA
 94104 USA
 415 693 1600

Project:

Project No:

Date:

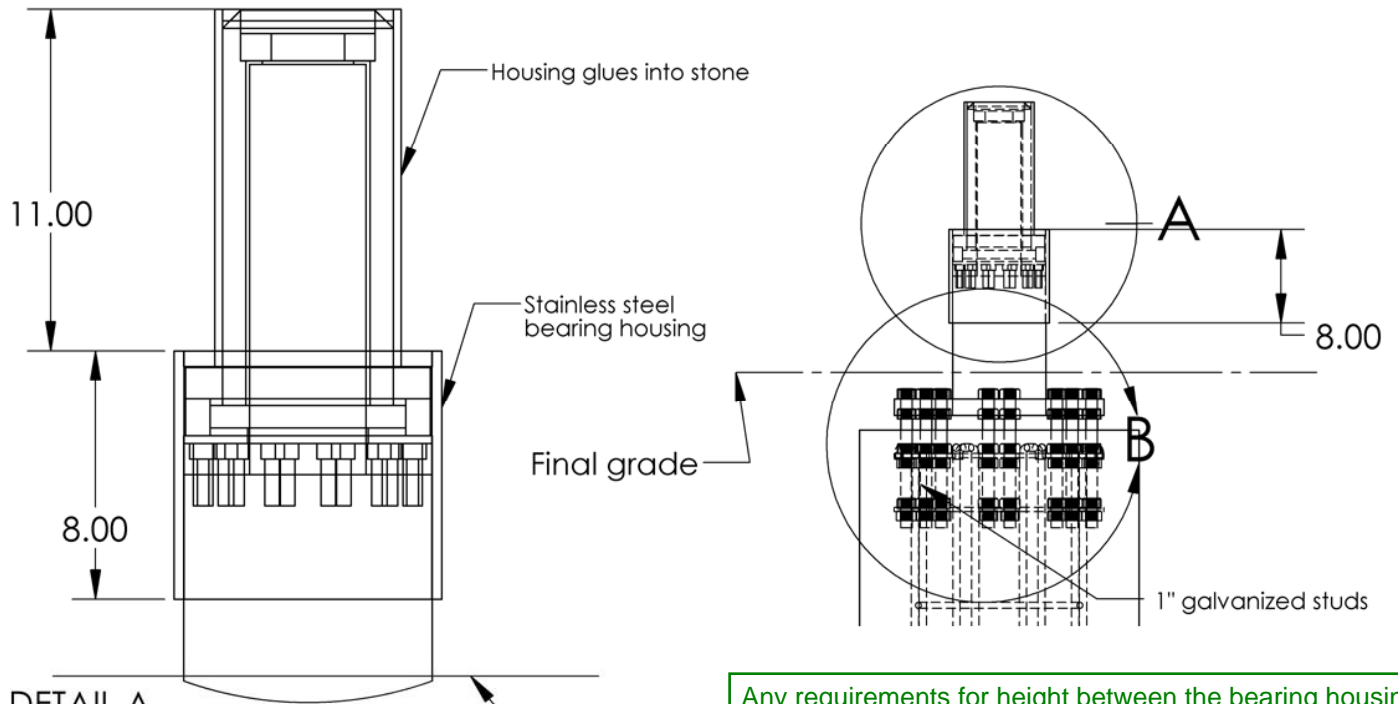
Sketch Title:

Scale:

Sketch No:

Rev:

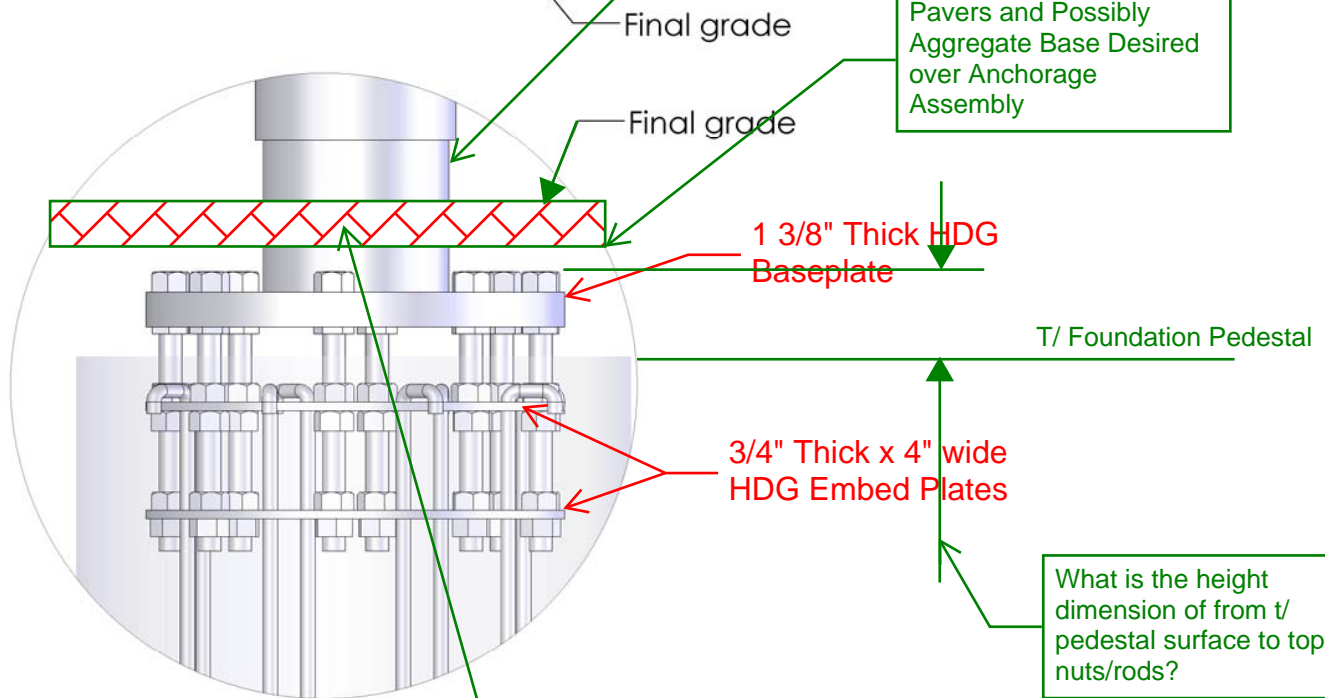
By:



DETAIL A
SCALE 1 : 6

Any requirements for height between the bearing housing and the FG?

Pavers and Possibly
Aggregate Base Desired
over Anchorage
Assembly



DETAIL B
SCALE 1 : 8

Any feedback or requirements for having pavers over the anchorage assembly?

If t/ foundation pedestal has to be lower than the approx. 6" from FG as you've specified in your calculations and drawings, please advise on the ramifications.

What maintenance and regular inspection requirements do you have for the anchorage assembly, if any?

Rockspinner Bearing Detail

Gravity Works Inc.

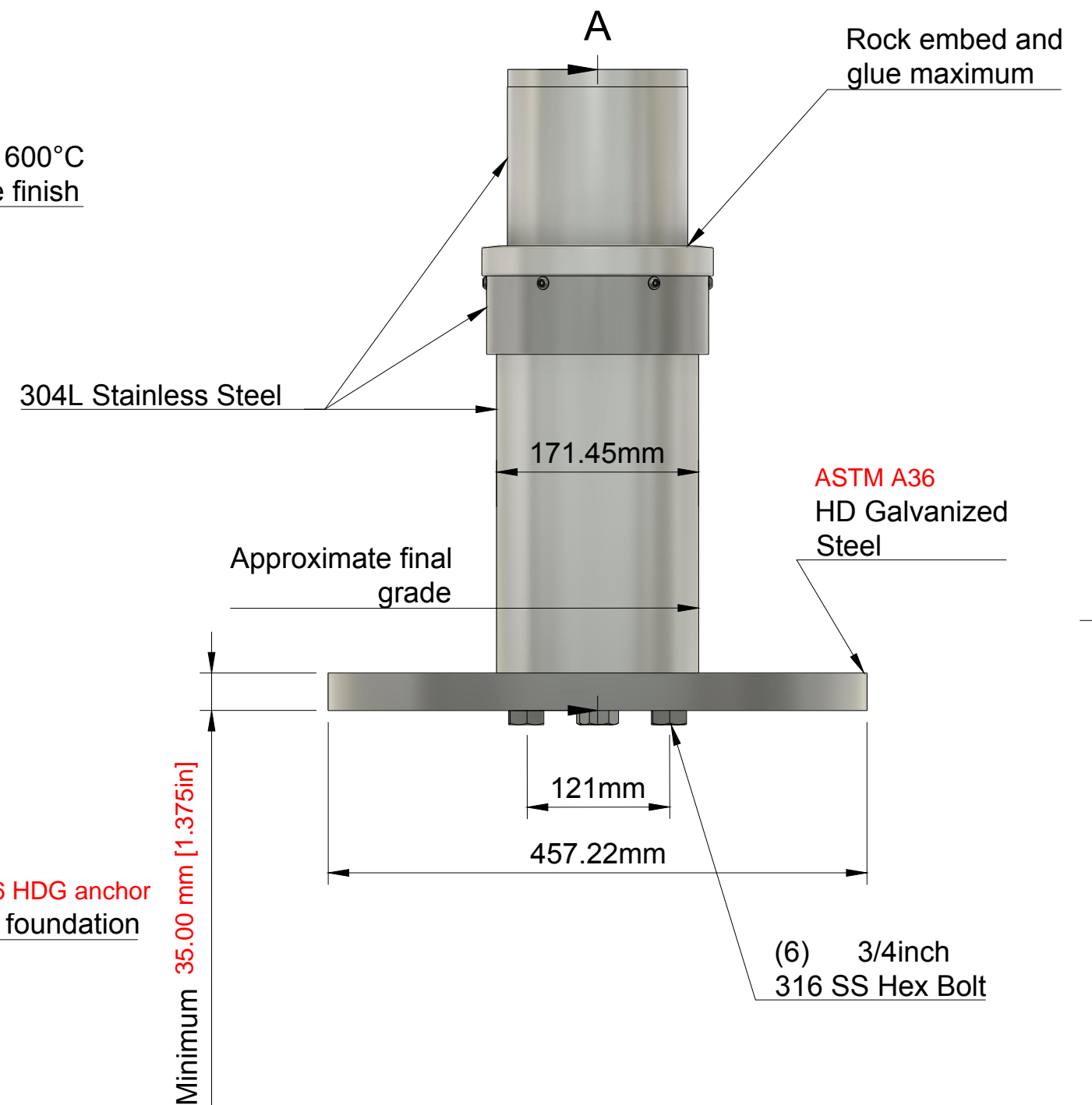
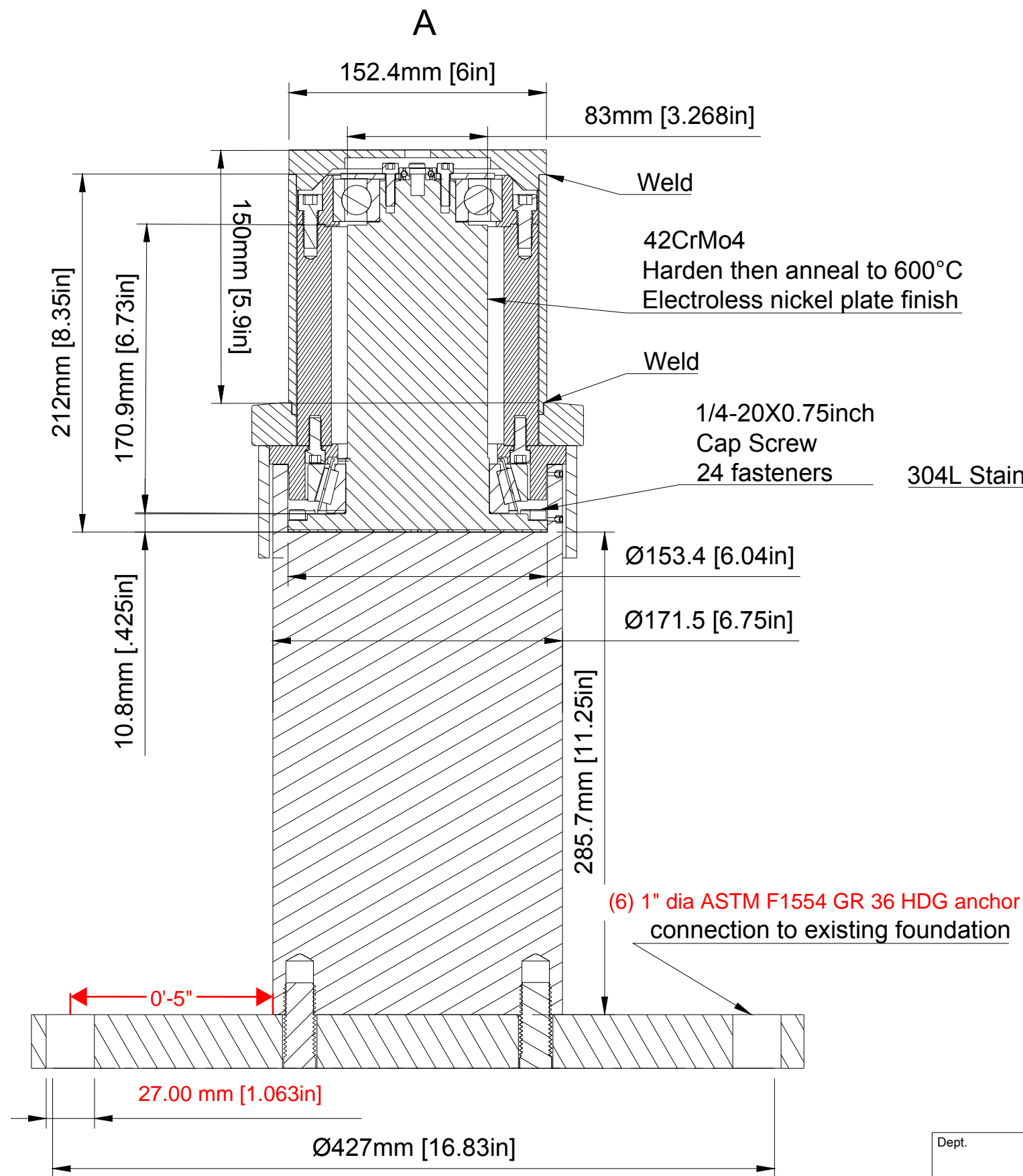
Not to scale, not for building.

SIZE DWG. NO. **A** drawing_w_details1 REV. SCALE:1:32 WEIGHT: SHEET 1 OF 1

PROPRIETARY AND CONFIDENTIAL
THE INFORMATION CONTAINED IN THIS
DRAWING IS THE SOLE PROPERTY OF
GRAVITY WORKS INC. ANY REPRODUC-
TION IN PART OR AS A WHOLE WITHOUT
WRITTEN PERMISSION OF GRAVITY
WORKS INC. IS PROHIBITED.

		DIMENSIONS	
		TOLERANCES	
		FRACTIONAL	
		ANGULAR: MATCH ±	BEND ±
		TWO PLACE DECIMAL ±	ENG APPR.
		THREE PLACE DECIMAL ±	
		MATERIAL	
NEXT ASSY	USED ON	FINISH	
APPLICATION		DO NOT SCALE DRAWING	

COMMENTS:



Dimensions for engineering analysis.
Proprietary, not for distribution.
All rights reserved.

Dept.	Technical reference	Created by Zachary Coffin 4/16/19	Approved by
		Document type	Document status
		Title Rockspinner Bearing	DWG No. SSK-3
		Rev.	Date of issue
		Sheet 1/1	