

Marin County Parks and Open Space



PROTECT
RESTORE
GROW
CONNECT

**Road and Trail
Management Plan /
Environmental Impact
Report:
Public Scoping and
Information Meetings**

Nov. 29 – Dec. 2, 2010

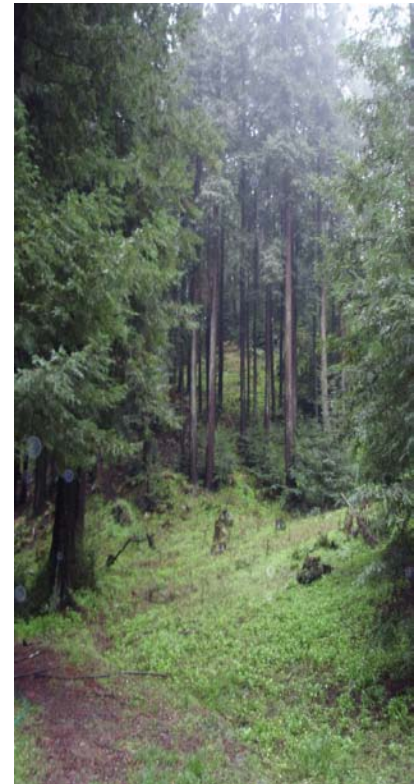
Welcome!

MEETING OBJECTIVES

- To provide information to the public regarding the development of a Road and Trail Management Plan (RTMP), and Environmental Impact Report (EIR)
- To solicit feedback and input from the public on issues related to their use and enjoyment of Open Space Preserves.

AGENDA

- 6:30pm **Gather to View Maps and other Materials**
- 6:40pm **Welcome, Introductions, and Purpose of RTMP/EIR**
Linda Dahl, Director, Department of Parks and Open Space
- 6:55pm **Background and Overview of MCOSD**
Ron Miska, Deputy Director, Department of Parks and Open Space
- 7:10pm **Breakout Group #1: Use and Enjoyment of Open Space Preserves**
- 7:25pm **Breakout Group #2: What's Working and What Isn't Working**
- 7:45pm **Moving Forward with the RTMP/EIR**
- 8:00pm **Adjourn – THANK YOU FOR YOUR PARTICIPATION!**



Ground Rules

- All participants, including the County, agree to:
 - show respect to all who participate
 - listen to and hear all ideas with an open mind
 - separate individuals and/or organizations from the problems
 - focus on interests rather than positions
 - move forward – learn from the past, but do not sacrifice future progress to it
 - work toward solutions with integrity
 - stay on topic

Carrying Capacity (aka Limits of Acceptable Change)

- Determine *range* of desired (and appropriate) experience conditions
- Determine *range* of desired (and appropriate) natural resources conditions
- Assess existing conditions
- Plan changes to turn existing into the desired conditions
- Monitor success, adjust as needed

What is “desired and appropriate”?

■ *Guidance found in*

- Marin County Open Space District Mission and Plans
- Marin Countywide Plan 2007
- California Environmental Quality Act (CEQA)

Marin County Parks and Open Space



Our Mission:
We are dedicated to educating, inspiring and engaging the people of Marin in the shared commitment of preserving, protecting and enriching the natural beauty of Marin's parks and open spaces, and providing recreational opportunities for the enjoyment of generations.

Marin Countywide Plan - 2007

- **Natural Resources** *Desired Conditions and Policies*

- **Open Space** *Desired Conditions and Policies*

- **Trails** *Desired Conditions and Policies*

- www.marinopenspace.org for link to CWP

MCOSD Background and Overview

■ What is the MCOSD?

- Marin County's vehicle for acquiring and stewarding upland greenbelts, community separators and other lands of environmental significance identified in the Marin Countywide Plan
- A tax-supported public agency
 - Governed by 5-member board of directors
 - Functions pursuant to California Public Resources Code Section 5500

MCOSD Background and Overview

- How, when and why was MCOSD created?
 - By voter approval of Measure A in the November 1972 general election. (40 yrs. in 2012!)
 - Part of national and statewide trend
 - Environmental Protection Act
 - Golden Gate National Recreation Area
 - Midpeninsula Regional Open Space District
 - Major change in focus of Marin Countywide Plan
 - Approval prompted by growth and development concerns



MCOSD Background and Overview

- Where does MCOSD's money come from?
 - Property tax revenues (stable and reliable)
 - Public and private grants
 - Donations
- Current Operating budget: \$5,000,000 +



MCOSD Background and Overview

- How does MCOSD spend its money?
 - Up to late 1970s – Mostly land acquisition
 - Up to mid 1990s – Balance of land purchases, stewardship projects, basic operating expenses

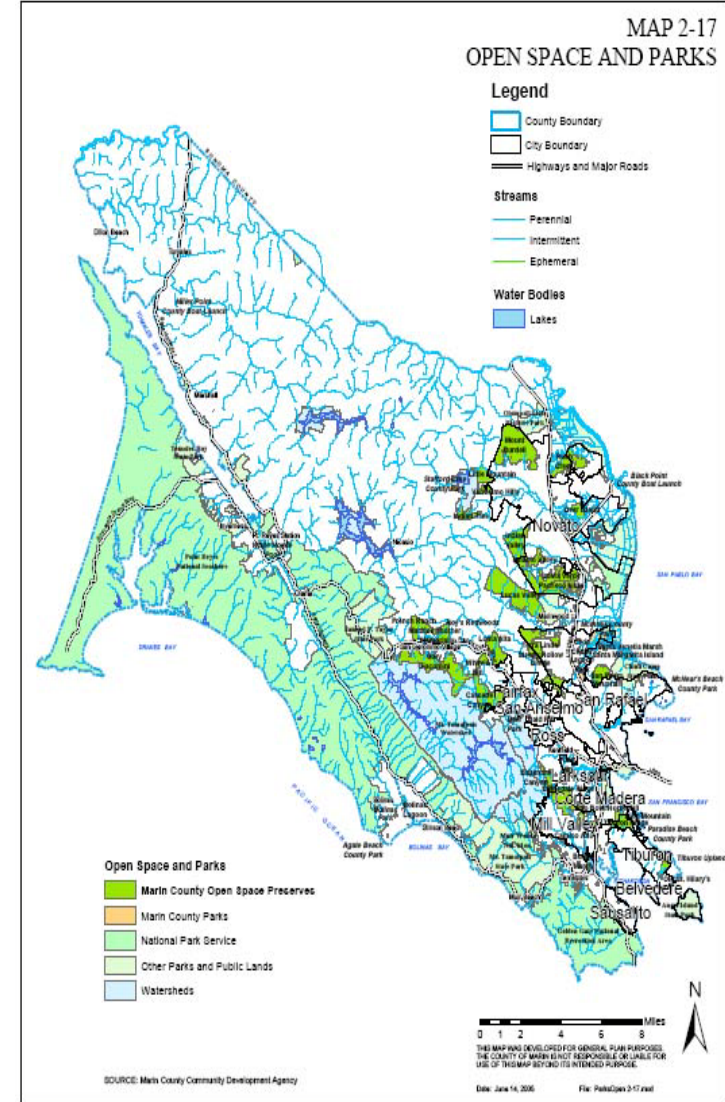


MCOSD Background and Overview

- How does MCOSD spend its money?
 - Mid 1990s to 2010 – Mostly basic operating expenses, some stewardship projects, little to no land acquisition
 - 2010-11 – Second major revenue decline in MCOSD's history
 - Prop 13 was first
 - Reduced operating expenses = reduction in maintenance levels, layoffs
 - Only highest priority stewardship projects move forward

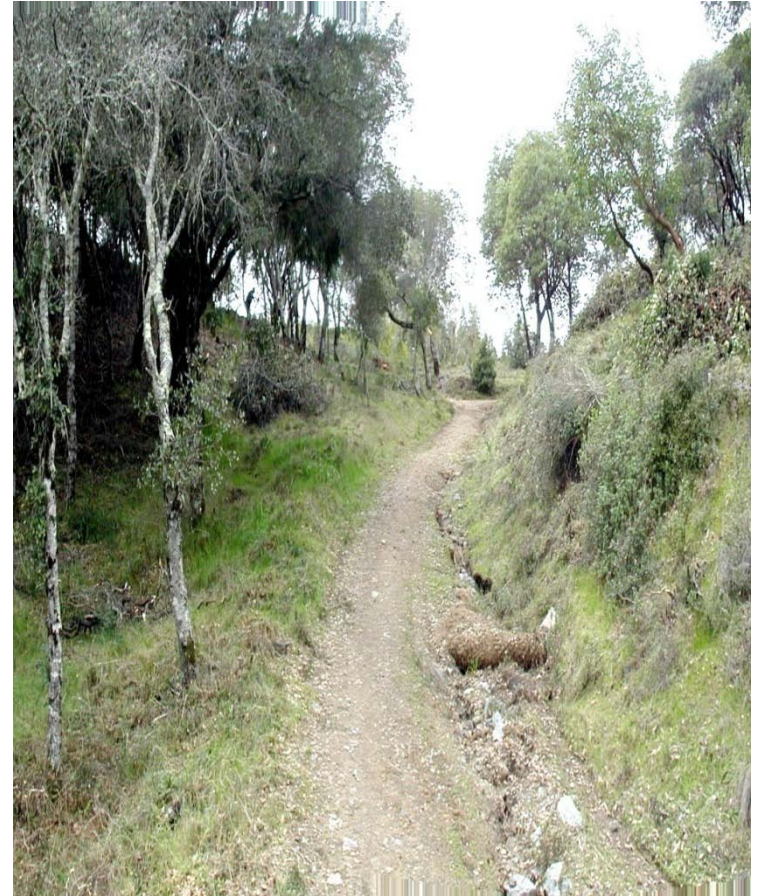
MCOSD Background and Overview

- What has MCOSD accomplished?
 - Acquired nearly 16,000 acres of publicly-accessible open space
 - Protected thousands more acres with conservation easements and contributions to other agencies to acquire land
 - Protect ecosystem functions (green infrastructure)
 - Provide over 200 miles of unpaved trails and roads for recreation



MCOSD Background and Overview

- Where did the roads and trails come from?
 - MCOSD inherited a system of unpaved roads and trails as it acquired more land
 - MCOSD preserves were formerly working lands.
 - fire protection and access, ranching and/or logging, and utility access.
 - Recreational trails were not a consideration.
 - evolved from either wildlife trails or informal recreational use patterns



MCOSD Background and Overview

- How do roads and trails on MCOSD preserves function?
 - Roads: recreation, fire protection, maintenance, emergency and utility access
 - Trails: recreation



RTMP Basics

- Where did the concept of a RTMP originate?
 - Parks and Open Space Strategic Plan
 - Resource Management Framework
 - Vegetation and Biodiversity Management Plan
 - Road and Trail Management Plan
 - Geologic and Cultural Resources Management Plan
 - Carbon Management Feasibility Study



RTMP Basics

- What will a RTMP accomplish that existing plans don't?
 - Marin Countywide Plan
 - Focused on location of roads and trails
 - No specific direction about resource or visitor management
 - Land management plans for individual preserves
 - Focus is too narrow

RTMP Basics

- How and why is the MCOSD changing its approach to road and trail management?
 - Comprehensive (system-wide) approach will enable us to more effectively allocate increasingly limited resources to address high priority resource and visitor management issues across the entire road and trail system



RTMP Basics

- Why invest in a RTMP now?
 - Natural resource impacts
 - Scope of trail conflict
 - Economic necessity
 - Address highest priority needs given limited resources
 - Availability of comprehensive data
 - vegetation communities
 - network of roads and trails

Guiding Principles

- Processes will be open and transparent
- Plans and actions will comply with California Environmental Quality Act requirements
- A comprehensive Road and Trail Management Plan is needed to guide and prioritize work, and inform decision making
- Coordinate with and support efforts of other public land managers in Marin to address trail access and safety issues

Guiding Principles

- During Phase 1 of the Road and Trail Management Plan, no policy changes will go into effect regarding bikes on narrow trails
- The size and management requirements of the trail system must be consistent with the Parks and Open Space Department's mission, Long-Term Restructuring Plan, and available staff and budget resources

Questions?

■ **Mission of the Department of Parks and Open Space**

We are dedicated to educating, inspiring, and engaging the people of Marin in the shared commitment of preserving, protecting and enriching the natural beauty of Marin's parks and open spaces, and providing recreational opportunities for the enjoyment of all generations.



Let's Get Started!

- Two Breakout Exercises
 - Use and Enjoyment of Open Space Preserves
 - What's Working and What Isn't Working





Marin County Parks and Open Space

Follow Our Progress at:
www.marinopenspace.org

Staff Contact:
Elise Holland
(415) 507-2820
eholland@co.marin.ca.us